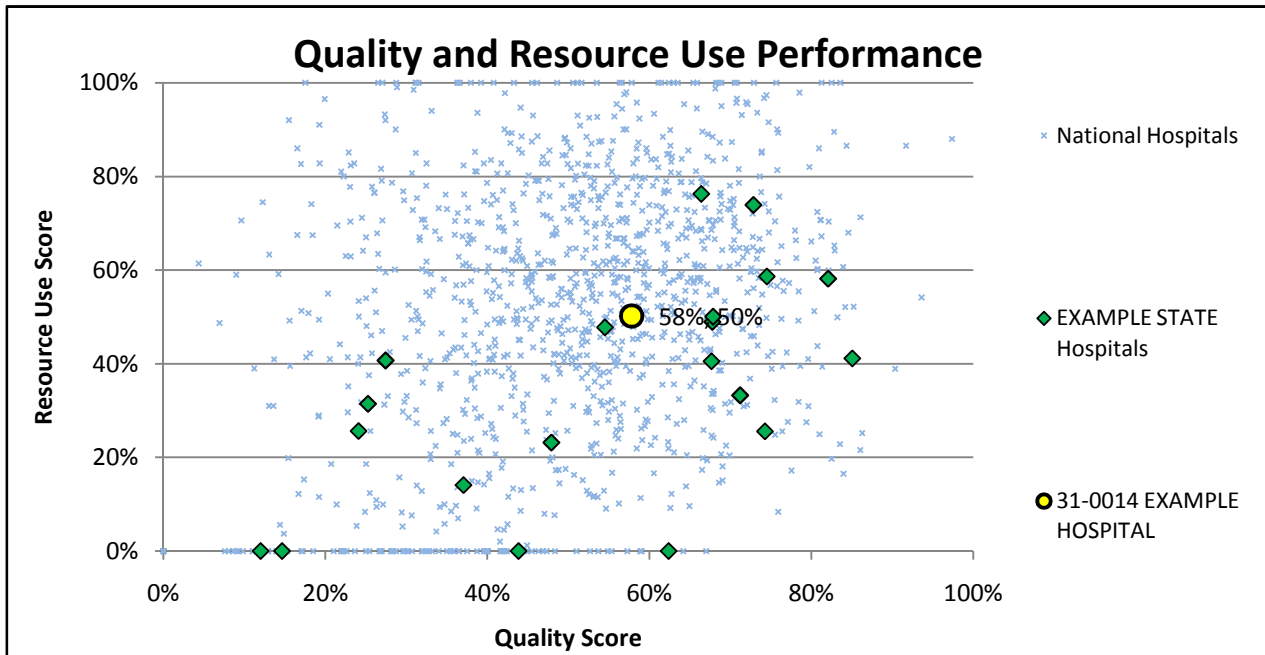


Your Quality Score	58%
Your Resource Use Score	50%
Your Efficiency Score	55%

The Efficiency Score is based on 65% Quality and 35% Resource Use.



National Efficiency Rankings		
	Decile	Score Range
	Top	71% or better
	2nd	66% to 71%
	3rd	61% to 66%
	4th	57% to 61%
EXAMPLE HOSPITAL--->	5th	53% to 57%
	6th	49% to 53%
	7th	45% to 49%
	8th	38% to 45%
	9th	29% to 38%
	10th	Less than 29%

For more information about this report, or to order a more detailed report, please visit:
[http://www.leapfroggroup.org/for_hospitals/fh-incentives_and_rewards/hosp_rewards_prog/lhrreports.](http://www.leapfroggroup.org/for_hospitals/fh-incentives_and_rewards/hosp_rewards_prog/lhrreports)

Report created on: May 11, 2009 All comparative hospital data is current as of 12/31/2008